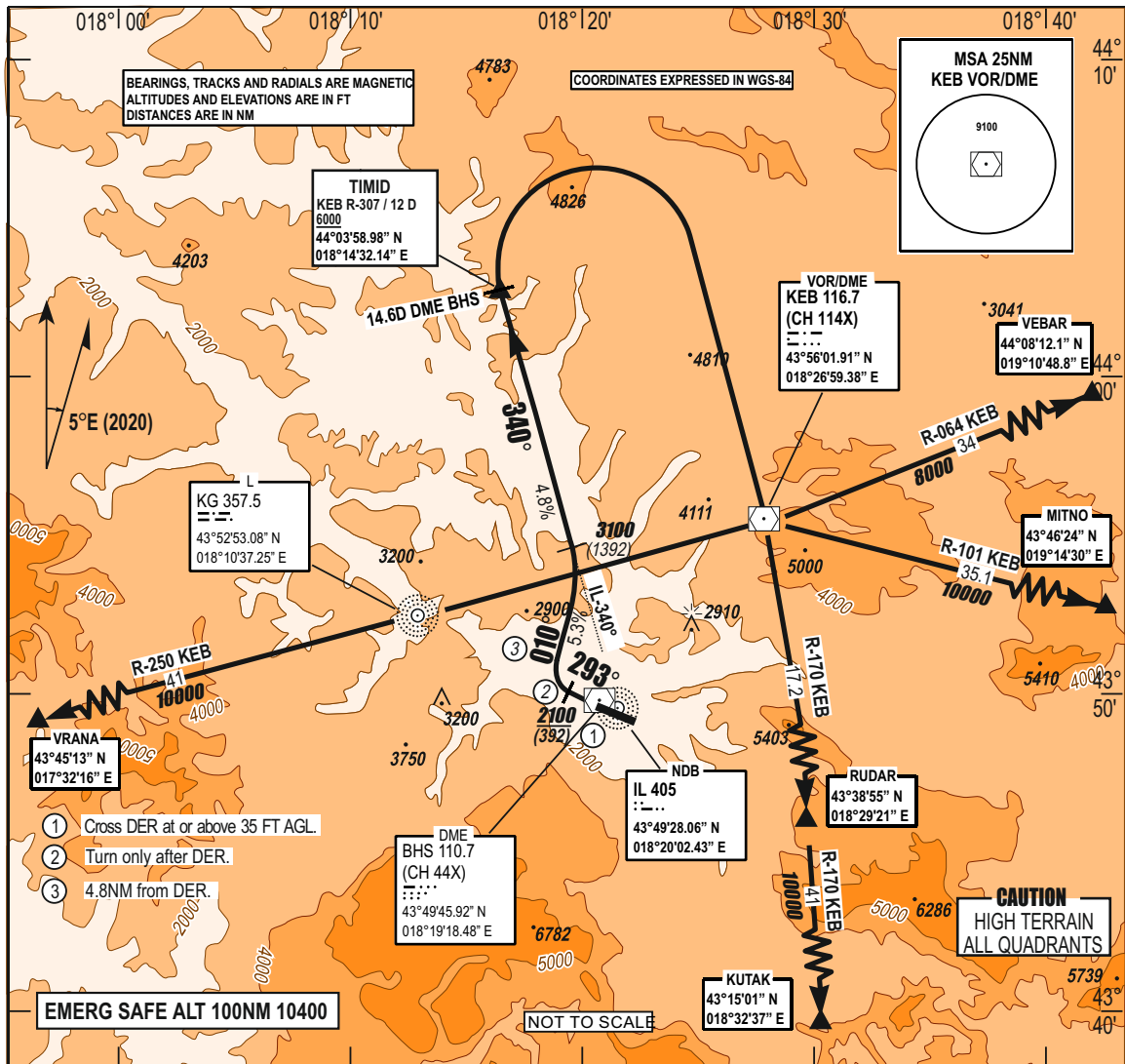


STANDARD DEPARTURE AD ELEV 1705 FT **TRANSITION** APP 136.450; 119.775 **SARAJEVO (LQSA)**
CHART INSTRUMENT HEIGHTS RELATED TO ALTITUDE TWR 118.250 **VEBAR 1B, KUTAK 1B**
 THR RWY 11 ELEV 1643 FT 10 000 FT GND 121.900 **MITNO 1D, VRANA1D (RWY 29)**
(SID) - ICAO VAR 5°E (2020) ATIS 124.125



RWY	KNOTS	60	120	180	240	300	360
29*	W-FPM	320	640	960	1280	1600	1920
29**	W-FPM	290	580	870	1160	1450	1740

* CLIMB RATE 5.3% MINIMUM CLIMB RATE TO 3100 FT
 ** CLIMB RATE 4.8% MINIMUM CLIMB RATE TO 6000 FT

CHG: RWY HEADING CORRECTED, AD ELEV.;

THIS PAGE INTENTIONALLY LEFT BLANK